

2016 Midyear Meeting Program Updates

AZA Antelope and Giraffe TAG

Chair, Martha Fischer, fischer@stlzoo.org

**ASSOCIATION
OF ZOOS
AQUARIUMS &**

Forest Woodland Subgroup

Vice Chair, Sharon Joseph, sjoseph@houstonzoo.org



Common eland

- 73.134.7 (214) in 26 AZA institutions
- ~145.222.22 (389) in North America
- **Yellow SSP - zoo population stable**
- Least Concern – wild population stable
- Challenges that affect program:
 - Unknown pedigree
 - Response rate for surveys/ lack of communication from non AZA holders
- What can TAG do to help program & improve sustainability?
 - Help resolve pedigree issues, better track pedigrees in future births
 - Contact program leader with studbook updates and wants & needs



Program Leader

- Lou Keeley
- Blank Park Zoo
- lkeeley@blankparkzoo.net
- 515.974.2504

Eastern bongo

- 58.104 (162) in 38 institutions
- Yellow SSP – zoo population ↑
- Critically Endangered – wild population ↑
- Challenges that affect program
 - Increase annual births
 - Need males
- What can TAG do to help program & improve sustainability?
 - Encourage animals not to be sent out of the SSP



- Program Leaders
- Ron Surratt-SSP Chair
 - Int'l Bongo Foundation
 - rsurratt@fortworthzoo.org
 - 817-759-7160
- John Ward – SSP Vice Chair
 - jward@fortworthzoo.org
- Courtney Janney- AZA Regional Studbook
 - cjanney@memphiszoo.org
- Lydia Bosley – Int'l Studbook
 - lfbosley@q.com

Eastern giant eland

- 23.31 (54) in 5 NA institutions
- No AZA program. International studbook - **zoo population** ↑
- Least Concern – wild population ↓
- Challenges that affect program:
 - Importation necessary to improve genetic viability
 - Nutritional/veterinary issues
 - Lack of space – more holders needed
 - Difficult to manage this as an AZA program due to ownership politics. The majority shareholder makes all of the final decisions & recommendations. This is the cause of many institutions leaving the program.
- What can TAG do to help program & improve sustainability?
 - Help broker working relationships between participating institutions

Program Leader

- Lissa McCaffree
- San Diego Zoo's Safari Park
- lmccaffree@sandiegozoo.org
- 760.492.4486



Gerenuk

- 35.47 (82) in 16 institutions
- Yellow SSP - zoo population stable
- Near Threatened – wild population ↓
- Challenges that affect program:
 - Need external imports from other countries
 - Untimely deaths of young animals
- What can TAG do to help program & improve sustainability?
 - Help bring in more genetics
 - Support AI research



Program leader

- Christina Seely
- Denver Zoo
- 720.337.1500
- cseely@denverzoo.org

Vice Coordinator

- Manda Butler
- Cameron Park Zoo
- Mandab@ci.ewaco.tx.us
- 254-750-8435

Impala

- 85.186.4 (275) at 22 institutions
- Yellow SSP
- Least Concern – wild population stable
- Studbook published in May 2015



- Program Leader
 - Emily Loerch
 - Disney's Animal Kingdom
 - Emily.K.Loerch@disney.com

Greater kudu

- 99.198.1 (298) in 38 institutions
- Yellow SSP - zoo population ↑
- Least Concern – wild population stable
- Challenges that affect program:
 - Low % known genetics in population
 - Lack of sexually mature males
- What can TAG do to help program & improve sustainability?
 - Promote studies that focus on developing DNA testing for population planning purposes
 - Continue dialogue with both AZA and non-AZA holders regarding benefits of SSP participation

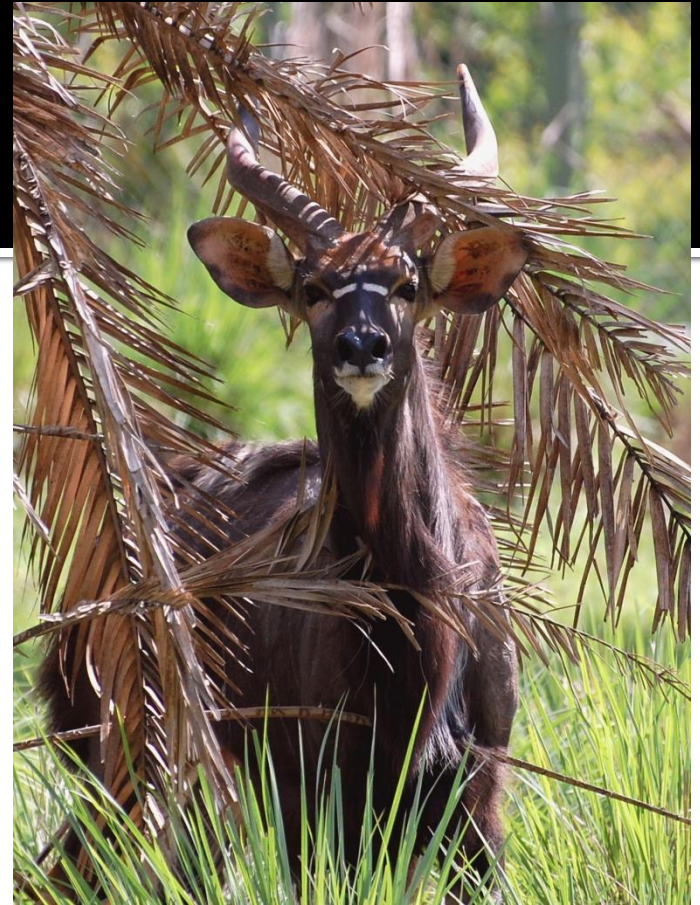


Program Leader

- Denny Charlton
- Smithsonian National Zoo
- charltond@si.edu
- 301.278.2069

Lowland nyala

- 60.120 (180) in 21 institutions
- Yellow SSP - zoo population ↑
- Least Concern – wild population stable
- Challenges that affect program:
 - New institutions needed for both bachelor and breeding groups
 - New genetics needed
- What can TAG do to help program & improve sustainability?
 - Assist with removing barriers to importation of animals or semen for artificial insemination



Program Leader

- Steve Metzler
- San Diego Zoo Safari Park
- smetzler@sandiegozoo.org
- 760.473.6993

Roan antelope

- 43.68 (111) in 10 institutions
- Yellow SSP - zoo population ↑
- Least Concern – wild population ↓
- Challenges that affect this program:
 - Loss of holding institutions
- What can TAG do to help program & improve sustainability?
 - Conduct a PVA
 - Continue to pursue new holding institutions

Program leader

- Andi Kornak
- Cleveland Metroparks Zoo
- amk@clevelandmetroparks.com
- 216.635.3373

Vice Chair

- Scotty Wade
- White Oak Conservation Center
- scottyw@wocenter.org
- 904-225-3357



Sable antelope

- 127 animals in 12 institutions
- Yellow SSP - zoo population ↑
- Least Concern – wild population ↓
- Challenges that affect program:
 - Lack of space/holders needed
 - New genetics required
 - Development of bachelor herds
- What can TAG do to help program & improve sustainability?
 - USDA import station to facilitated imports

Program leader

- Jill Piltz
- Disney's Animal Kingdom
- Jill.M.Piltz@Disney.com
- 407.938.2850



Sitatunga

- 28.43 (71) in 10 institutions
- Yellow SSP - zoo population increasing
- Least Concern – wild population ↓
- Challenges that affect program:
 - Lack of space – more holders needed for bachelor groups
 - Genetics – improve genetic health
- What can TAG do to help program & improve sustainability?
 - Work with US regulators allowing imports from European collections or wild



Program Leader

- Gil Myers
- National Zoological Park
- myersg@si.edu
- 202.633.3216

Southern lesser kudu

- 58.54 (112) in 19 institutions
- Yellow SSP - zoo population stable
- Near Threatened – wild population ↓
- Challenges that affect program:
 - Lack of space - more holders needed for bachelor Kudu
 - New genetics needed
- What can TAG do to help program & improve sustainability?
 - Help get more institutions on board for holding surplus males.
 - Import new founders from Europe



Program Leader

- Lily Civili
- Saint Louis Zoo
- civili@stlzoo.org
- 314.646.4651

South African Springbok

- 33.55.1 (89) in 12 institutions
- Yellow SSP - zoo population ↑
- Least Concern – wild population ↑
- Challenges that affect program:
 - More bachelor and breeding herds are becoming available
 - Need new holding institutions
- What can TAG do to help program & improve sustainability?
 - Encourage institutions to consider Springbok in their current or future exhibits as space becomes available
 - Reminder to institutions: please keep transfers within AZA institutions so population can meet target size $n=100$



Program Leader

- Jessica Scallan
- Tulsa Zoo
- Jessica.scallan@sbcglobal.net
- 918.669.6201

Mountain nyala

- Not managed in zoos
- ISF – *in situ* Focus program
- Endangered – wild population ↓
- Challenges that affect wild population:
 - Habitat destruction/over-grazing
 - Competition with livestock & humans
- What can TAG do to help program & improve sustainability?
 - Encourage AZA institutions to support mountain nyala conservation and education programs in Ethiopia



Program Liaison

- Martha Fischer
- Saint Louis Zoo
- fischer@stlzoo.org
- 314.646.4610

Small Antelope Subgroup

Vice Chair, Jeff Holland, jeff.holland@lacity.org



Black duiker

- 13.12 (25) in 7 institutions
- Red SSP– zoo population ↑
- Least Concern – wild population ↓
- Challenges that affect program:
 - Lack of institutional holders
 - New genetics needed
 - Need to decrease trauma-related deaths
- Population has increased over the last two years



Program Leader

- Jeff Holland
- Los Angeles Zoo
- Jeff.holland@lacity.org
- 323.644.4220

Blue duiker

- 22.28.1 (51) in 16 institutions
- Yellow Program – zoo population ↑
- Least Concern – wild population stable
- Challenges that affect program:
 - Need additional institutions
 - Importation needed. Institutions willing to put forth the effort/cost to import are needed.
- What can TAG do to help program & improve sustainability?
 - Encourage AZA institutions to work with this program. Blue duikers are super adorable, cute, and would make a great addition to your collection plan. They can even be exhibited with other animals.



Program Leader

- Sarah Ksiazek
- Dallas Zoo
- alphadawg7@gmail.com
- 469.554.7235

Günther's dik-dik

- 9.4 (13) in 7 institutions
- Red SSP - zoo population ↓
- Least Concern – wild population stable
- Challenges that affect program:
 - Not breeding in captivity
 - New blood needed
 - Need to determine reason existing pairs are not breeding
 - Transfers and research needed.
- What can TAG do to help program & improve sustainability?
 - Develop import station to import from Africa.
 - Bring in additional animals from Private Sector



Program Leader

- Paige McNickle
- Phoenix Zoo
- pmcnickle@thephxzoo.com
- paagie@yahoo.com
- 602-451-8364

Kirk's dik-dik

- 23.26 .1 (50) in 18 institutions
- Yellow SSP - zoo population mostly stable
- Least Concern – wild population stable
- Challenges that affect program:
 - Different cytotypes = sterile males
 - Live in pairs not herds
 - More holders needed
 - Need to cytype unknowns
 - New known genetics needed
- What can TAG do to help program & improve sustainability?
 - Assist in determining taxonomic status of identified cytotypes.
 - Bring in and test individuals from private sector , Europe or the wild.

Program Leader

- Paige McNickle
- Phoenix Zoo
- pmcnickle@thephxzoo.com
- paagie@yahoo.com
- 602.451.8364



Klipspringer

- 26.28 (54) in 19 institutions
- Yellow SSP - zoo population ↑
- Least Concern – wild population stable
- Challenges that affect program:
 - It is extremely important for the population, both genetically and demographically, that the population be grown as quickly as possible to the target population size. All females capable of producing offspring should be bred.
- What can TAG do to help program & improve sustainability?
 - Encourage institutions to work with this species



Program Leader

- Michael Lebanik
- Disney's Animal Kingdom
- Michael.g.lebanik.jr@disney.com
- 407.938.2701

Red-flanked duiker

- 21.12 (33) in 12 institutions
- Red SSP- zoo population ↓
- Least Concern – wild population ↓
- Challenges that affect program:
 - Lack of space - more holders needed
 - New genetics needed
- What can TAG do to help program & improve sustainability?
 - Support possible importation in the near future
 - Encourage institutions to follow recommendations to ensure zoo population increases
 - This species does well in multi-species habitats!



Program Leader

- Nate Oliveira
- Saint Louis Zoo
- oliveira@stlzoo.org
- 314.646.4546

Steenbok

- 8.9 (17) in 4 institutions
- **Candidate Program - zoo population ↑**
- Least Concern – wild population stable
- Challenges that affect program:
 - Small population size
 - Lack of new institutional interest
 - Recommending institutions hand rear when possible
- What can TAG do to help program & improve sustainability?
 - Assist with marketing of this species to increase zoo spaces to grow program

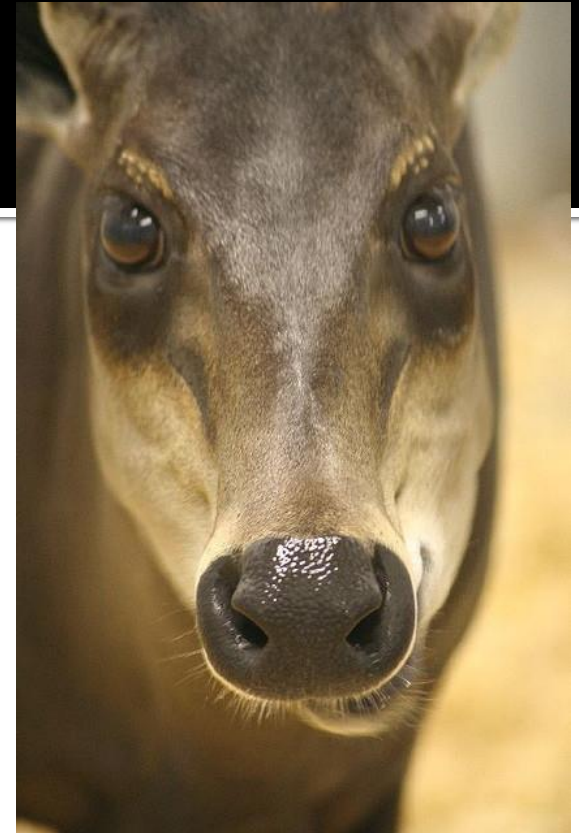


Program Leader

- Steve Metzler
- Sand Diego Safari Park
- smetzler@sandiegozoo.org
- 760.473.6993

Yellow-backed duiker

- 48.42.1(91) in 31 institutions
- Yellow SSP - zoo population ↑
- Least Concern – wild population ↓
- Challenges that affect program:
 - Population is reaching its target size in NA
 - Studbook and SSP are both due to be updated
- What can TAG do to help program & improve sustainability?
 - Encourage institutions to work with this species
 - Promote this species for multi-species habitats



Program Leader

- Linda Rohr-Bachers
- Milwaukee County Zoo
- Linda.bachers@milwcnty.com
- 414.256.5448

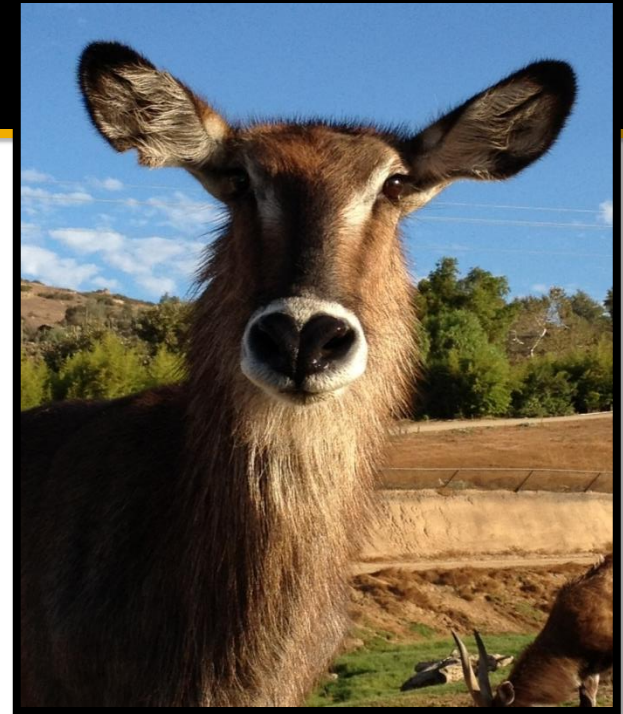
Waterbuck Subgroup

Vice Chair, Randy Rieches, rrieches@sandiegozoo.org



Common waterbuck

- 99.142.12 (253) in 16 institutions
- Yellow SSP - zoo population ↓
- Least Concern – wild population ↓
- Challenges that affect this program:
 - Lack of known pedigree for genetic management
 - Holding for surplus males
 - Decrease in interest in exhibiting this species
- What can TAG do to help program & improve sustainability?
 - Develop opportunities for multiple males to rotate within herds to enhance genetic diversity
 - Contribute to known pedigree population by encouraging facilities to collect and submit biological samples. See program leader for info.



Program leader

- Jonnie Capiro
- San Diego Zoo Safari Park
- jcapiro@sandiegozoo.org
- 760.738.5582

Nile lechwe

- 61.115.42 (218) in 10 institutions
- Yellow SSP - zoo population stable
- Endangered – wild population ↓
- Challenges that affect program:
 - Need more holding institutions
 - More bachelor holding required
 - New genetics needed
 - Geographical compartmentalization due to challenges with shipment
- What can TAG do to help program & improve sustainability?
 - Promote the inclusion of this species in collections
 - Work on bringing in additional animals from private sector



Program leader:

- Mike Murray
- Cleveland Metroparks Zoo
- mjm@clevelandmetroparks.com
- 216.635.3312

Red lechwe

- 6.16 at 2 institutions
- **Candidate Program**
- Least concern – wild population stable
- Challenges that affect program:
 - Need new holders to grow the population
- What can TAG do to help program & improve sustainability?
 - Need to identify new holders to take animals in from private institutions



Program leader:

- Mel Covey
- Disney's Animal Kingdom Lodge
- (402) 490-9487
- Melissa.a.covey@disney.com

Uganda kob

- 21.20.2 (43) in 4 institutions
- 3.9 (12) in 1 private institution
- **Red SSP**
- Least concern – wild population stable
- Challenges that affect program:
 - Small zoo population is not sustainable
 - Lack of institutional interest
- What can TAG do to help program & improve sustainability?
 - Recruit program leader
 - Need new zoo holders to bring in animals from private institutions to build a sustainable population



Program leader:

- **Vacant – program leader needed!**

Mountain reedbuck

- Not managed in zoos
- ISF – *in situ* Focus program
- Least Concern – wild population stable (pop. 36,000)
- Challenges that affect wild population:
 - Over hunting
 - Habitat destruction/over-grazing
 - Competition with livestock & humans
- What can TAG do to help program & improve sustainability?
 - Encourage better species monitoring in home ranges



Program Liaison

- Randy G. Rieches
- San Diego Zoo Safari Park
- rrieches@sandiegozoo.org
- 760-738-5015

Hartebeest Subgroup

Vice Chair, Dan Beetem, dbeetem@thewilds.org



Bontebok

- 30.41.12 (83) in 17 institutions
- Yellow SSP - zoo population ↑
- Near Threatened – wild population stable
- Challenges that affect this program:
 - Possibility of hybrid animals in population
 - Large number of animals on a private ranch excluded due to unknown genetics
 - New genetics needed
 - Not all females in the population are in a breeding situation
- What can TAG do to help program & improve sustainability?
 - USDA import station to facilitate imports
 - Encourage all facilities holding females to breed



Program leader

- Lissa McCaffree
- San Diego Zoo Safari Park
- lmccaffree@sandiegozoo.org
- 760.492.4486

Jackson's hartebeest

- 13.7 (20) in 5 institutions
- Red SSP - zoo population ↓
- Least Concern – wild population ↓
- Challenges that affect program:
 - Very small captive population
 - New genetics needed
 - Carrier of MCF virus
- What can TAG do to help program & improve sustainability?
 - Help find institutions willing to take on this species and implement breeding programs



Program Leader

- Mollye Nardi
- Zoo Atlanta
- mnardi@zooatlanta.org
- 404.624.5611

Wildebeest

- 81.123.27 (231) in 22 institutions
- Yellow SSP - zoo population ↑
- Least Concern – some isolated populations are declining
- Challenges that affect program:
 - Older females – not breeding or their calf mortality is increasing
- What can TAG do to help program & improve sustainability?
 - Continue to support genetic testing



Program Leader

- Kristen Wolfe
- Disney's Animal Kingdom
- Kristen.wolfe@disney.com
- 407.938.2377

Hirola

- Not managed in zoos
- ISF – *in situ* Focus program
- Critically endangered – wild population ↓
- Challenges that affect wild population:
 - Predation
 - Habitat destruction/over-grazing
 - Competition with livestock & humans
- What can TAG do to help program & improve sustainability?
 - Encourage AZA institutions to support Hirola Recovery Project in Kenya



Program Liaison

- Martha Fischer
- Saint Louis Zoo
- fischer@stlzoo.org
- 314.646.4610

Aridland Antelope, Gazelle & Pronghorn Subgroup

Vice Chair, Adam Eyres, adame@fossilrim.org



Addax

- 87.164 (251) in 22 institutions
- Yellow SSP - zoo population ↑
- Critically Endangered ↓
- Challenges that affect program:
 - Lack of space - more holders needed
- What can TAG do to help program & improve sustainability?
 - Encourage holding institutions to work with bachelor herds

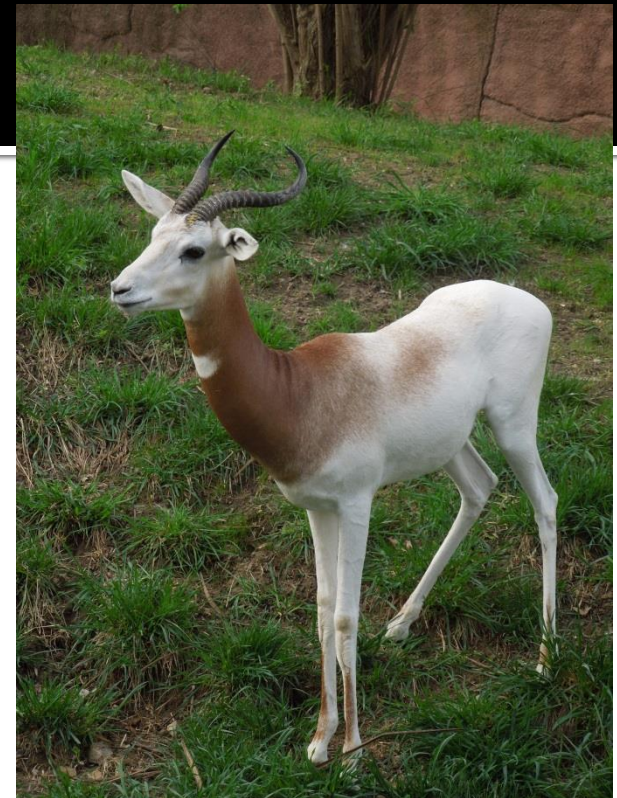


Program Leader

- Bill Houston
- Saint Louis Zoo
- houston@stlzoo.org
- 314.646.4826

Addra gazelle

- 77.95 (171) in 22 institutions
- Yellow SSP - zoo population stable
- Critically endangered – wild population ↓
- Challenges that affect program:
 - Need more spaces especially for males.
 - Unrelated animals need to be identified.
- What can TAG do to help program & improve sustainability?
 - Encourage institutions to work with this high priority species



Program Leader

- Tim Thier
- tthier@stlzoo.org
- 314.646.4647

Arabian Oryx 2016

- 38.83 (121) in 8 AZA institutions
- Yellow SSP - zoo population ↑
- Vulnerable – wild population stable
- Challenges that adversely affect program:
 - Males difficult to bachelor group
 - Loss of holding institutions
 - No new genetics
- What TAG can do to help program & improve sustainability?
 - Help with solution for extra males
 - Need facilities to try bachelor groups or house single males
 - More holders- herds available now!



- Program Leader

Michelle Hatwood

ISB Keeper & SSP Coordinator

- Audubon Species Survival Center
- mhatwood@auduboninstitute.org
- 504-398-3153

Cuvier's gazelle

- 14.20 (34) in 2 AZA institutions and 1 non- AZA institution
- Yellow SSP - zoo population ↓
- Endangered – wild population unknown
- Challenges that affect program:
 - Lack of space – more holders needed.
 - ♀/♀ aggression has been noted in some collections.
- What can TAG do to help program & improve sustainability?
 - Generate an Antelope mixed species survey/database that can be updated on a regular basis.

Program Leader

- Wendy Enright
- The Living Desert
- Wenright@Livingdesert.org
- 760.346.5694 Ext. 2211



Fringe-eared oryx

- 18.31 (49) in 4 institutions
- Red SSP - zoo population ↑
- Near Threatened – wild population ↓
- Challenges that affect this program:
 - Lack of space – more holders needed
 - New genetics required
 - Need to increase populations size
 - Need for rotating breeding males at each institution
- What can TAG do to help program & improve sustainability?
 - Facilitate import for increased genetic diversity

Program leader

- Melissa McCartney
- Sacramento Zoo
- mmccartney@saczoo.org
- 760.492.4486



Gemsbok

- 21.58.6 (85) in 10 institutions
- Yellow SSP - zoo population ↓
- Least Concern – wild population ↓
- Challenges that affect program:
 - Lack of space - more holders needed
 - Lack of known pedigree and individual IDs
 - Need for rotating breeding males at each institution
- What can TAG do to help program & improve sustainability?
 - Facilitate import (poss. White Sands) to increase genetic diversity



Program Leader

- Melissa McCartney
- Sacramento Zoo
- mmccartney@saczoo.org
- 760.492.4486

Grant's gazelle

- 12.33 (45) in 9 institutions
- Yellow SSP - zoo population stable
- Least Concern – wild population ↓
- Challenges that affect program:
 - Lack of available animals
 - Unknown pedigrees
- What can TAG do to help program & improve sustainability?
 - Help develop a plan to deal with the large amount of UNK data in this population
 - Help program meet zoos' demands for animals



Program Leader

- Allison Suda
- Roosevelt Park Zoo
- asudarpz@srt.com
- 701.857.4166

Peninsular Pronghorn

- 20.13 (23) in 7 institutions
- Red SSP
- Endangered – wild population ↑
- Challenges that affect program:
 - Small captive population in need of imports
 - Loss of animals to Epizootic Haemorrhagic Disease and Blue Tongue
- What can TAG do to help program & improve sustainability?
 - Support for EHD and BT vaccine (LA ZOO)
 - Support for Peninsular Pronghorn Recovery Project in Baja Ca Sur 2015

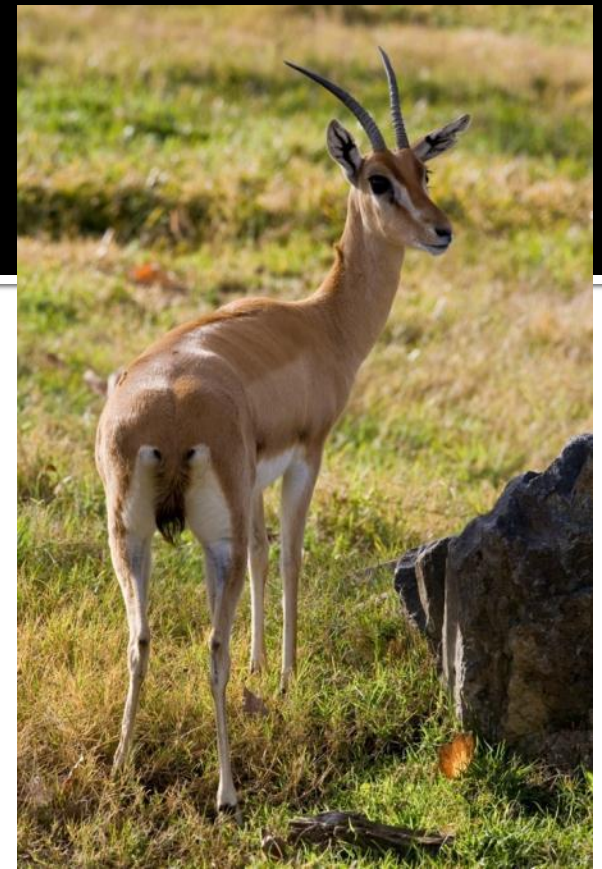


Program Leader

- Melodi Tayles
- San Diego Zoo Safari Park
- mtayles@sandiegozoo.org
- 760.855.1911

Red-fronted gazelle

- 13.19 (32) in 1 institution
- Red SSP
- Vulnerable – wild population ↓
- Challenges that affect program:
 - Single holder, few founders, erratic breeding
- What can TAG do to help program & improve sustainability?
 - Promote species to find new holders
 - Encourage support of field conservation of this species through Sahara Conservation Fund



Program Leader

- Lanny Brown
- Nashville Zoo
- Lbrown@nashvillezoo.org

Scimitar-horned oryx

- 83.139.3 (227) animals in 19 institutions
- Yellow SSP - zoo population ↑
- Extinct in the Wild
- Challenges that affect this program:
 - Lack of space/holders needed
 - Male-male aggression
 - Three species rule (USFWS)
- What can TAG do to help program & improve sustainability?
 - Support repatriation/reintroduction efforts
 - Facilitate importation of unrelated animals

Program Leader

- Sheri Horiszny
- Santa Barbara Zoo
- shoriszny@sbzoo.org
- 805.962.5339 ext 135



Soemmerring's gazelle

- 20.24 (44) in 8 institutions
- Red SSP- zoo population mostly stable
- Vulnerable – wild population ↓
- Challenges that affect program:
 - Lack of space/ more holders needed
 - Genetics/high infant mortality
- What can TAG do to help program & improve sustainability?
 - Support genetic studies to improve breeding success
 - Need new imports



Program Leader

- Stacey Konwiser
- Palm Beach Zoo
- skonwiser@palmbeachzoo.org
- 561-533-0887

Speke's gazelle

- 21.37 (58) in 11 institutions
- Yellow SSP - zoo population ↓
- Endangered – wild population ↓
- Challenges that affect program:
 - Lack of space - more holders needed
 - New genetics needed
- What can TAG do to help program & improve sustainability?
 - Develop import station so Speke's gazelles could be imported from Al Ain Zoo in UAE 2016



Program Leader

- Christy Poelker
- Saint Louis Zoo
- poelker@stlzoo.org
- 314.646.4651

Slender-horned gazelle

- 33.45 (78) in 10 institutions
- Yellow SSP - zoo population ↑
- Endangered – wild population ↓
- Challenges that affect program:
 - Lack of space - more holders needed
 - New genetics needed
- What can TAG do to help program & improve sustainability?
 - Develop import station so Slender-horned gazelles could potentially be imported from collections in North Africa & Middle East



- Program Leader
- Brigid Randle
- Living Desert Zoo
- brandle@livingdesert.org
- 760.346.5694 ext 2200

Thomson's gazelle

- 64.116.1 (181) in 17 AZA institutions & 1 non-AZA institutions
- Yellow SSP - zoo population steady
- Near Threatened – wild population ↓
- Challenges that affect program:
 - Highly unknown population
 - New genetics needed
- What can TAG do to help program & improve sustainability?
 - Encourage holders to give up females short-term to benefit the population (and their herds) long-term.



Program Leader

- Lanny Brown
- Nashville Zoo
- lbrown@nashvillezoo.org

Saiga

- Not managed in zoos
- ISF – *in situ* Focus program
- **Critically Endangered – wild population ↓**
- Challenges that affect wild population:
 - Poaching for horns and meat
 - Competition with livestock & humans
 - Habitat destruction/over-grazing
- What can TAG do to help program & improve sustainability?
 - Encourage AZA institutions to support saiga conservation projects in Russia and Central Asia



Program Liaison

- Dan Beetem
- The Wilds
- dbeetem@thewilds.org
- 740.638.5030 ext 2110

Giraffe/Okapi Subgroup



Masai giraffe

- 44.58 (102) in 27 institutions
- Yellow SSP - zoo population slightly ↑
- Least Concern – wild population ↓
- Challenges that affect this program:
 - Rising levels of inbreeding
 - New genetics needed, but none available
 - The birth of 19.4 births in 2011-2012 has resulted in a current scarcity of young females.
- What can TAG do to help program & improve sustainability?
 - Continue to encourage the already remarkably high levels of cooperation among these holders.



Program Leader

- Laurie Bingaman Lackey
- ISIS
- giraffe3@bellsouth.net
- +1 828.693.4336

Retic/Roth giraffe

- 147.251.24 neutered males (422) in 84 institutions
- Green SSP - zoo population stable-to-slightly ↑
- Least Concern – wild population ↓
- Challenges that affect this program:
 - If zoos decide to transfer animals to non-AZA facilities, then there will potentially not be sufficient young animals to meet AZA needs.
 - Inability to move animals due to feeding platform issues.
- What can TAG do to help program & improve sustainability?
 - Encourage zoos to focus on other antelope species - the giraffe population is twice the size necessary for genetic or demographic sustainability and growing steadily. Devote some of these resources to other programs.



Program Leader

- Laurie Bingaman Lackey
- ISIS
- giraffe3@bellsouth.net
- 828.693.4336

Okapi

- 54.53 (107) in 28 institutions (incl. Japan and Al Bustan)
- **Yellow SSP - zoo population stable**
- Near Threatened - wild population ↓ in unprotected areas
- Challenges that affect program:
 - Always looking for more holders!
 - Genetic exchanges needed
- What can TAG do to help program & improve sustainability?
 - Improve ability to import



Program Leader

- Ann Petric
- annpetric2240@comcast.net
- 708.442.6531

2016 Midyear Meeting Program Updates

AZA Buffalo, Bison, Cattle and Camelid TAG

Chair, Lisa Smith, lsmith@gpzoo.org

**ASSOCIATION
OF ZOOS
AQUARIUMS &**

Wild Cattle and Camelid TAG

- Welcome to the new steering committee members:
 - Jeff Holland, Mike Quick, Amy Roberts, Tony Fischer, Andy Blue, Dan Beetum, Jordan Schimming, Curt Coleman, Telena Welsh, Richard Rosevear, Denise Ibarra, Darrel Markum, and Joshua Patrick
- *Looking for Banteng or Bison – there are animals out there needing immediate placement – just contact Lisa Smith for more information*
- **Recent TAG accomplishments:**
 - *African Savannah Buffalo upgraded from Candidate Species to Yellow SSP.*
 - *Congratulations to Joshua Patrick – Gaur Candidate Program Coordinator*
- **Current TAG initiatives include:**
 - *Championing a Bison initiative to get interested institutions to DNA test their American Bison. Contact Tony Fischer if interested: Tony.Fisher@state.mn.us*
 - *ACTION INDONESIA: Participation in the Global Species Management Plans for Banteng and Anoa*
 - *IUCN Asian Wild Cattle Specialist Group Conservation Projects*
 - *Saola Working Group: www.SavetheSoala.org*
- Greatest Challenge for this TAG is Sustainability - due to lack of space and interest most species are currently well below any hope of sustainability under current conditions. We are desperately looking to change that where we can. Any ideas and suggestions are welcome!



Program Leader

- Lisa Smith, TAG Chair
- Great Plains Zoo
- lsmith@gpzoo.org
- 605.367.8313 ext. 119

Anoa

- 4.6 (10) in 7 AZA institutions
- ~140 in 3 private institutions
- **Yellow SSP - zoo population ↓**
(overall, pop in NA ↑)
- Endangered – wild population ↓
- Challenges that affect program:
 - Lack of space - more holders needed
- What can TAG do to help program & improve sustainability?
 - Encourage AZA institutions to step up and commit to conserving anoa and other wild cattle through participation in the SSP



Program Leader

- Tena Welsch
- Point Defiance Zoo and Aquarium
- Tena.Welsch@pdza.org
- 253.404.3684

Banteng Candidate Program

- Animals are available for immediate placement; Call Curt for more information.

Your help could save me from extinction!



Program Leader

- Curt Coleman
- The Wilds
- ccoleman@thewilds.org
- 740.638.5030 ext. 2804

Gaur Candidate Program



Program Leader

- Joshua Patrick
- Zoo Miami
- jospat@miamidade.gov
- 305.251.0400

African Savannah Buffalo

- 21.37.1 (59) in 6 institutions
- Yellow SSP - zoo population ↑
- Least Concern – wild population ↓
- Challenges that adversely affect program:
 - Loss of holding institutions
 - Need to improve genetic diversity
- What TAG or Institutions can do to help program & improve sustainability?
 - New holding institutions
 - Include this weather hearty species in collection planning
- Congratulations to Jordan for getting the studbook completed and working with the PMC to get the program upgraded to a Yellow SSP!



Program Leader

- Jordan Schimming
- Denver Zoo
- jschimming@denverzoo.org
- 720.337.1614

American Bison Candidate Program

- The TAG is championing an initiative to get interested institutions to DNA test their American Bison and potentially partner with National Parks and others for reintroduction efforts. Contact Tony Fischer if you need info on how to test your herd:
Tony.Fisher@state.mn.us



Program Leader

- Richard Rosevear
- Leigh Valley Zoo
- Rrosevear@lvzoo.org
- 610.799.4171

Guanaco Candidate Program



Program Leader

- Denise Ibarra
- Abilene Zoo
- Denise.ibarra@abilenetx.com
- 325.280.1939

Bactrian Camel Candidate Program



Program Leader

- Darrel Markum
- Idaho Falls Zoo at Tautphaus Park
- dmarkum@idahofallszoo.org
- 208.612.8419

2016 Midyear Meeting Program Updates

AZA Caprinae TAG

Chair, Jeff Holland, jeff.holland@lacity.org

**ASSOCIATION
OF ZOOS
AQUARIUMS &**

Chinese goral

- 14.13 (27) in 11 institutions
- Red SSP - zoo population stable ↓
- Vulnerable – wild population ↓
- Challenges that affect program:
 - Decline in breeding results
 - Aging population
 - New genetics needed
- What can TAG do to help program & improve sustainability?
 - Work with US regulators allowing imports from the European collections or wild



Program Leader

- Gil Myers
- National Zoological Park
- myersg@si.edu
- 202.633.3216

Desert bighorn sheep

- 23.39(66) in 7 institutions *
- Yellow SSP – zoo population stable
- Least Concern – wild population stable
- Challenges that affect program:
 - Lack of space
 - New genetics needed
- What can TAG do to help program & improve sustainability?
 - More holders needed
 - Consider replacing *Ovis canadensis canadensis* with *O. c. nelsoni*



Program Leader

- Maureen McCarty
- The Living Desert
- mmccarty@livingdesert.org
- 760.346.5694 ext. 2620

Kordofan aoudad

- 13.25 (38) in 3 institutions
- Red SSP – zoo population ↓
- Vulnerable – wild population ↓
- Challenges that affect program:
 - Lack of space/more holders needed
 - New genetics needed
- What can TAG do to help program & improve sustainability?
 - Promote the species to AZA



Program Leader

- Dana Caton
- Bronx Zoo
- dcaton@wcs.org
- 678.591.1846

Nubian ibex

- 22.40 (62) in 9 institutions
- Red SSP - New Studbook ↓
- Vulnerable – wild population ↓
- Challenges that adversely affect program:
 - Lack of space - more holders needed
 - New genetics needed
- What can TAG do to help program & improve sustainability?
 - Work with European Population Manager to import new genetics
 - Institutional support needed for Dr. Omar Attum's research: Establishing a population monitoring program in Egypt (contact Dr. Attum at oattum@ius.edu)



Program Leader

- Alison Mott
- Sacramento Zoo
- amott@saczoo.org
- 916.808.8559

Sichuan takin

- 69.61.3 (132) in 23 institutions
- Yellow SSP - zoo population ↑
- Vulnerable – wild population ↓
- Challenges that adversely affect program:
 - Lack of space - more holders needed
 - New genetics needed
- What can TAG do to help program & improve sustainability?
 - Assist with importations/exportations from Europe and Asia.
 - Help recruit new institutions



- Program Leader
- Dave Bernier
- Lincoln Park Zoo
- dbernier@lpzoo.org
- 312.742.2374

Tadjik markhor

- 101 in 10 AZA institutions
- 1.9 (16) in 1 CAZA institutions
- Yellow SSP – zoo population ↑
- Endangered – wild population ↓
- Challenges that affect this program:
 - Lack of spaces (Need Holders)
 - New genetics needed
 - Current Research
 - Genome mapping of populations
- What can TAG do to help program & improve sustainability?
 - Survey and Conservation work in Tajikistan
 - Markhor Conservation through Community Based Management in Gilgit-Baltistan, Pakistan, for *C. f. falconeri*



Program Leader

- Tom LaBarge
- Rosamond Gifford Zoo
- ThomasLaBarge@ongov.net
- 315.435.8511 ext 117

2014 Midyear Meeting Program Updates

AZA Cervid TAG

Chair, Michelle Hatwood,

mhatwood@auduboninstitute.org

**ASSOCIATION
OF ZOOS
AQUARIUMS &**

Bactrian wapiti

- 13.30.5 (48) in 2 institutions
- Red SSP - zoo population ↑
- Least Concern
 - *Bactrianus* ssp. Increasing in central Asia due to field conservation efforts
- Challenges that affect this program:
 - Small population with low gene diversity
 - Just another “brown deer” mentality in zoos
 - CWD restrictions affect transfers
- What can TAG do to help program & improve sustainability?
 - Increase holding space to allow annual breeding to sustain species
 - Imports from EAZA are possible if interest warrants the effort

Program leader

- Curt Coleman
- The Wilds
- ccoleman@thewilds.org
- 740.638.5030



Barasingha

- 20. 35(55) in 4 institutions
- **Yellow SSP - zoo population ↑**
- Vulnerable – wild population ↓
- Challenges that affect this program:
 - Lack of space/holders needed
 - CWD monitoring and regulations
- What can TAG do to help program & improve sustainability?
 - Investigate additional space

Program leader

- Matt Gelvin
- San Diego Zoo Safari Park
- mgelvin@sandiegozoo.org
- 760-622-5026



Barbary stag

- 3.43 (46) in 1 institution
- Red SSP - zoo population ↓
- Least Concern
 - *Barbarus* ssp. declining in Africa
- Challenges that affect this program:
 - Lack of space / holders needed
- What can TAG do to help program & improve sustainability?
 - More institutions needed to sustain this species
 - Imports not possible from other captive programs -ISIS

Program leader

- Michael Langridge
- San Diego Zoo
- SDwildlife1976@yahoo.com
- 619.231.1515



Calamian deer

- 6.4 (10) in 3 institutions
- Red SSP – zoo population ↓
- Endangered – wild population ↓
- Challenges that affect this program:
 - Low reproductive success
 - Captive population declining fast
 - New genetics required
- What can TAG do to help program & improve sustainability?
 - USDA import station to facilitate imports

Program leader

- Robin Noll
- Los Angeles Zoo
- Robin.noll@lacity.org
- 323.644.4125



Chilean Pudu

- 14.31 (45) in 15 institutions
- Red SSP - zoo population ↑
- CITES I; IUCN Vulnerable – wild population ↓
- Breeding and Transfer plan published November 2015
- Challenges that affect program:
 - New genetics needed (possible future import)
- What can TAG do to help program & improve sustainability?
 - Develop collaborative in country pudu rehabilitation program with Chile or EAZA.



Program Leader

- Penny Kalk
- Bronx Zoo
- pkalk@wcs.org
- 718.220.7113

Elds deer

- 22.41 (63) in 6 institutions
- **Yellow SSP - zoo population** ↓
- Endangered – wild population ↓
- Qualified in the top 100 of the AZA SAFE list
- Challenges that affect this program:
 - Lack of space/holders needed
 - Population isolation, movement restrictions due to CWD
- What can TAG do to help program & improve sustainability?
 - Increase holders and space
 - Help Facilitate embryo imports from Thailand and animal imports/exports with EAZA to infuse new genetics

Program leader

- Dolores Reed
- Smithsonian Conservation Biology Institute
- reeddm@si.edu
- 540.635.6524



Malayan chevrotain

- 16.13 (29) in 9 institutions
- Red SSP - zoo population ↓
- Least Concern – wild population ↓
- Challenges that affect this program:
 - New genetics required
- What can TAG do to help program & improve sustainability?
 - More breeding institutions needed that can hold multiple offspring

Program leader

- Dave Powell
- Bronx Zoo
- dpowell@wcs.org
- 718.220.5162



Moose

- 14.33 (47) in 12 institutions
- Red SSP - zoo population ↑
- Stable wild population, but declining in Minnesota
- Challenges that affect program:
 - CWD prohibits many zoos from accepting wild orphans
 - Husbandry has improved but more work is needed
- What can TAG do to help program & improve sustainability?
 - Coordinate captive breeding efforts to meet CWD restrictions in all states
 - Provide advice on husbandry challenges



Program Leader

- Tony Fisher
- Minnesota Zoo
- Tony.fisher@state.mn.us
- 952.431.9275

Pere David's deer

- 47.61.1 (109) in 11 institutions
- Yellow SSP
- Extinct in the Wild
- Challenges that affect this program:
 - Coordinate breeding efforts
- What can TAG do to help program & improve sustainability?
 - Facilitate CWD surveillance for transfer of animals

Program leader

- Elizabeth Schille
- Disney Animal Kingdom
- Beth.schille@disney.com
- 407.938.3201



Red brocket deer

- 8.5 (13) in institutions (2 AZA, 2 non-AZA)
- Red SSP - zoo population ↓
- Wild population decreasing ↓
- Challenges that affect this program:
 - Genetic research needed to determine taxonomy and range of *temama* and *americana*
 - Low number of females, need private facilities to help
- What can TAG do to help program & improve sustainability?
 - Imports
 - Find other private facilities that may have them in the US

Program leader

- Jennifer Archibeque
- Happy Hollow Zoo and Park
- Ja.ziegelmeier@gmail.com
- 661.645.6839



Siberian musk deer

- 10.5 (15) in 4 institutions
- 8.14 (22) in 1 private ???
- **Candidate Program - zoo population stable**
- Vulnerable – wild population ↓
- Challenges that affect this program:
 - Wild population may be listed as endangered soon
 - Need more institutional holders
 - Can only hold in cool climates
- What can TAG do to help program & improve sustainability?
 - Expand number of holding institutions of this unique and rare ungulate
 - Import/trade from EAZA

Program leader

- Matt Ardaiole
- Denver Zoo
- mardaiolo@denverzoo.org
- 720.337.1669



Western tufted deer

- 38.25 (63) in 18 institutions
- Yellow SSP - zoo population ↓
- Near Threatened – wild population ↓
- Challenges that affect this program:
 - Extra males
 - New genetics may be needed in the future
- What can TAG do to help program & improve sustainability?
 - USDA import station to facilitate imports

Program leader

- Steve Castillo
- Disney Animal Kingdom
- Steve.castillo@disney.com
- 407.938.2335



White-lipped deer

- 12.15 (27) in 3 institutions
- Red SSP- zoo population ↓
- Vulnerable – wild population ?
 - May be increasing?
- Challenges that affect this program:
 - Development of bachelor herds
 - CWD issues impacting movement of larger cervids more than smaller species
- What can TAG do to help program & improve sustainability?
 - Increase interest and space
 - Coordinate captive breeding efforts to meet CWD restrictions in all states

Program leader

- Steve Castillo
- Disney Animal Kingdom
- Steve.castillo@disney.com
- 407.938.2335



Reeve's Muntjac

- 77.77.7 (161) at 51 institutions
- Red SSP – zoo population ↑
- Least Concern – wild population ↓
- First studbook will be published by Jan. 2017
- Challenges that affect this program
 - Need to produce a studbook
- What can the TAG do to help improve the program & sustainability issues?
 - Support coordinated breeding and transfers to minimize genetic diversity loss

- Program Leader

- Jennifer Webb
- Zoo Atlanta
- jwebb@zooatlanta.org
- 404.624.5873



2016 Midyear Meeting Program Updates

AZA Equid TAG

Chair, Tim Thier, tthier@stlzoo.org

**ASSOCIATION
OF ZOOS
AQUARIUMS &**

Asian wild horse

- 62.72(134) in 22 institutions
- Yellow SSP - zoo population stable
- Endangered – wild population ↑
- Challenges that affect program:
 - Compliance with SSP recommendations
 - Zoos reluctant to hold bachelor groups
- What can TAG do to help program & improve sustainability?
 - Encourage institutional cooperation
 - Support reintroduction projects in China, Kazakhstan and Mongolia



Program Leaders

- Tony Fisher-SSP
 - Minnesota Zoo
 - tony.fisher@state.mn.us
 - 952.431.9275
- Dave Powell – Studbook
 - Bronx Zoo
 - dpowell@wcs.org
 - 718.220.5162

Grevy's zebra

- 62.111.1 (174) in 38 institutions
- Green SSP - zoo population stable
- Endangered – wild population stable
- Challenges that affect program:
 - Due to space constraints it is important to identify additional holding institutions
 - Male holding space is an SSP priority. Zoos with breeding herds need to be able to house male offspring for 2-4 years
 - Facilities separating stallions should include outdoor access
- What can TAG do to help program & improve sustainability?
 - TAG recommendation – Zoos with Plains zebras in single-species exhibits are urged to replace them with Grevy's Zebras



Program Leader

- Martha Fischer
- Saint Louis Zoo
- fischer@stlzoo.org
- 314.646.4610

Hartmann's mountain zebra

- 30.64 (94) in 12 institutions (10 AZA and 2 non-AZA)
- **Yellow SSP - zoo population stable**
- Vulnerable– wild population
- Challenges that affect program:
 - Low population numbers.
- What can TAG do to help program & improve sustainability?
 - Encourage more institutions to switch exhibits to Hartmann's.
 - Seek out private holders to join the SSP.



Program Leader

- Vacant
- If interested send applications to Tim Thier tthier@stlzoo.org

Persian onager

- 10.24 (34) in 3 institutions
- Red SSP- zoo population stable
- Endangered – wild population stable
- Challenges that affect program:
 - Lack of space - more holders needed
 - Genetics - new genetics needed
- What can TAG do to help program & improve sustainability?
 - Consider managing onagers and kulan as a single population instead of separate sub-species to allow “hybrids” and animals of lesser known pedigrees into the program



Program Leader

- Kate Volz
- National Zoological Park
- volzk@si.edu
- 202.633.3216

Plains zebra

- 80.203.1(284) in 69 institutions
- Yellow SSP - zoo population stable
- Least Concern – wild population stable
- Challenges that affect program:
 - Small number of viable males
- What can TAG do to help program & improve sustainability?
 - Keep viable males intact for breeding recommendations
 - Possible bachelor herd facilities



Program leader

- John Register
- Houston Zoo
- jregister@houstonzoo.org
- 713.533.6682

Somali wild ass

- 21.35 (56) in 9 institutions
- Yellow SSP - zoo population ↑
- Critically Endangered – wild population ↓
- Challenges that affect program:
 - Lack of space - more holders needed
 - Institutions need to be prepared to hold offspring in reserve for this program for at least 2 years (and sometimes longer)
- What can TAG do to help program & improve sustainability?
 - Increase holding institutions to meet target population



Program Leader

- Tim Thier
- Saint Louis Zoo
- tthier@stlzoo.org
- 314.646.4647

2016 Midyear Meeting Program Updates

AZA Wild Pig, Peccary and Hippo TAG

Chair, Martin Ramirez, Martin.Ramirez@Zoo.org

**ASSOCIATION
OF ZOOS &
AQUARIUMS**

Babirusa

- 60 animals in 15 institutions
- Yellow SSP - zoo population stable
- Vulnerable – wild population stable
- Indonesian Initiative Species
- Births outpacing deaths
- Being considered as a GSMP
- SSP is exporting 3.2 to EAZA



Program Leader

- Jeff Holland
- Los Angeles Zoo
- jeff.holland@lacity.org
- 323.644.4220

Studbook Keeper

- Joe Forys
- Audubon Zoo
- jforys@auduboninstitute.org

Chacoan peccary

- 22.34.1 (57) in 12 institutions
- Yellow SSP - zoo population ↑
- Endangered - wild population ↓
- Challenges that affect this program:
 - New institutions needed
- What can TAG do to help program & improve sustainability?
 - Encourage institutions to ship out collared peccaries and replace them with Chacoan peccaries



Program Leader

- Dennis Meritt
- dmeritt@depaul.edu
- 773.325.4937

Collared peccary

- 22.19.1 (42) in 13 institutions
- Red SSP - zoo population ↓
- Least Concern – wild population stable
- What can TAG do to help program & improve sustainability?
 - Ship out your collared peccaries and replace them with Chacoan peccaries
 - Do not breed your collared peccaries.
 - We have three female javelina that are over 10 years old that need to be placed to make room for Chacoan peccaries.



Photo By: Megan Spooner

Program Leader

- Jim Haigwood
- Los Angeles Zoo
- Jim.haigwood@lacity.org
- 323.644.4213

Common warthog

- 71.74.2 (147) in 45 institutions
- Yellow SSP – zoo population ↑
- Least Concern – wild population stable
- Interim Breeding and Transfer plan sent to holders to address immediate needs/wants February 2016
- New holders always welcome so we can grow the population!!!
- Challenges that affect this program:
 - Inbreeding – lack of unrelated adult animals/ New genetics required – must come from known lineages to be helpful
 - High infant mortality
 - Some institutions not following breeding recommendations and others not willing to hold young for a year
 - Institutions not being clear as to what they want when requesting animals/changes
- What can the TAG /holders do to help improve the program & sustainability issues?
 - Import new ***known*** genetics!
 - Increase holding capacity when building new or renovating exhibits/holding areas



Program leader

- Lisa Smith
- Great Plains Zoo
- Lsmith@gpzoo.org
- 605.367.8313 ext 19

Red river hog

- 96.105.5 (206) in 56 institutions
- Yellow SSP - zoo population ↑
- Least Concern - wild population ↓
- Challenges that affect this program:
 - Red River Hogs are taking up valuable space for the more endangered pig and peccary species (Babirusa, Visayan Warty Pig, and Chacoan Peccary)
 - Starting to look at reproductive issues with some pairs



Program Leaders

- Jeff Holland – SSP
 - Los Angeles Zoo
 - Jeff.holland@lacity.org
 - 323.644.4220
- Peter Burvenich – Studbook
 - Rolling Hills Zoo
 - peter@rollinghillszoo.org

River hippopotamus

- 37.60.1 (98) in 37 institutions
- Yellow SSP - zoo population stable
- Vulnerable - wild population ↓
- Challenges that affect this program:
 - Surplus males
 - Breeding is constrained by the limited number of formed breeding pairs
- What can TAG do to help program & improve sustainability?
 - Institutions are encouraged to plan for additional holding and breeding space
 - New institutions or institutions interested in housing additional animals should contact the SSP coordinator



Program Leader

- John Davis
- Riverbanks Zoo
- Jdavis@riverbanks.org
- 803.978.1062

Pygmy Hippopotamus

- 15.18 (33) in 15 institutions
- Red SSP - zoo population slowly ↑
- Endangered – wild population ↓
- 14.35.2 held by 1 non-AZA facility
 - Working to develop partnership
 - All animals are in the studbook
- Challenges that adversely affect program:
 - Female-biased sex ratio
 - Lack of space – need new institutions
- What TAG can do to help program & improve sustainability?
 - Help recruit new institutions and encourage them to support Pygmy Hippo *in situ* projects.



Program Leader

- Christie Eddie – Yellow SSP Coordinator and Studbook Keeper
- Omaha's Henry Doorly Zoo and Aquarium
- christie@omahazoo.com
- 402-557-6932

Visayan warty pig

- 34.41 (75) in 18 institutions
- Yellow SSP - zoo population ↑
- Critically Endangered - wild population ↓
- Challenges that affect this program:
 - Potential that females are shutting down following relatively short periods of being in non-reproductive situations.
 - Have had some aggression issues in single sex groups
- What can TAG do to help program & improve sustainability?
 - Still planning to request more support from holders for in-situ conservation projects
 - San Diego Zoo now exhibits them with Malayan Tapir
 - VIP brushing experience!



- Craig Miller – SSP Coordinator
 - Jacksonville Zoo and Gardens
 - millerc@jaxzoo.org
 - 904.757.4463 x136
- Stephanie DeYoung – Studbook Keeper
 - Sponsored by San Diego Zoo
 - zoopersteph@yahoo.com
 - 325.692.8327